

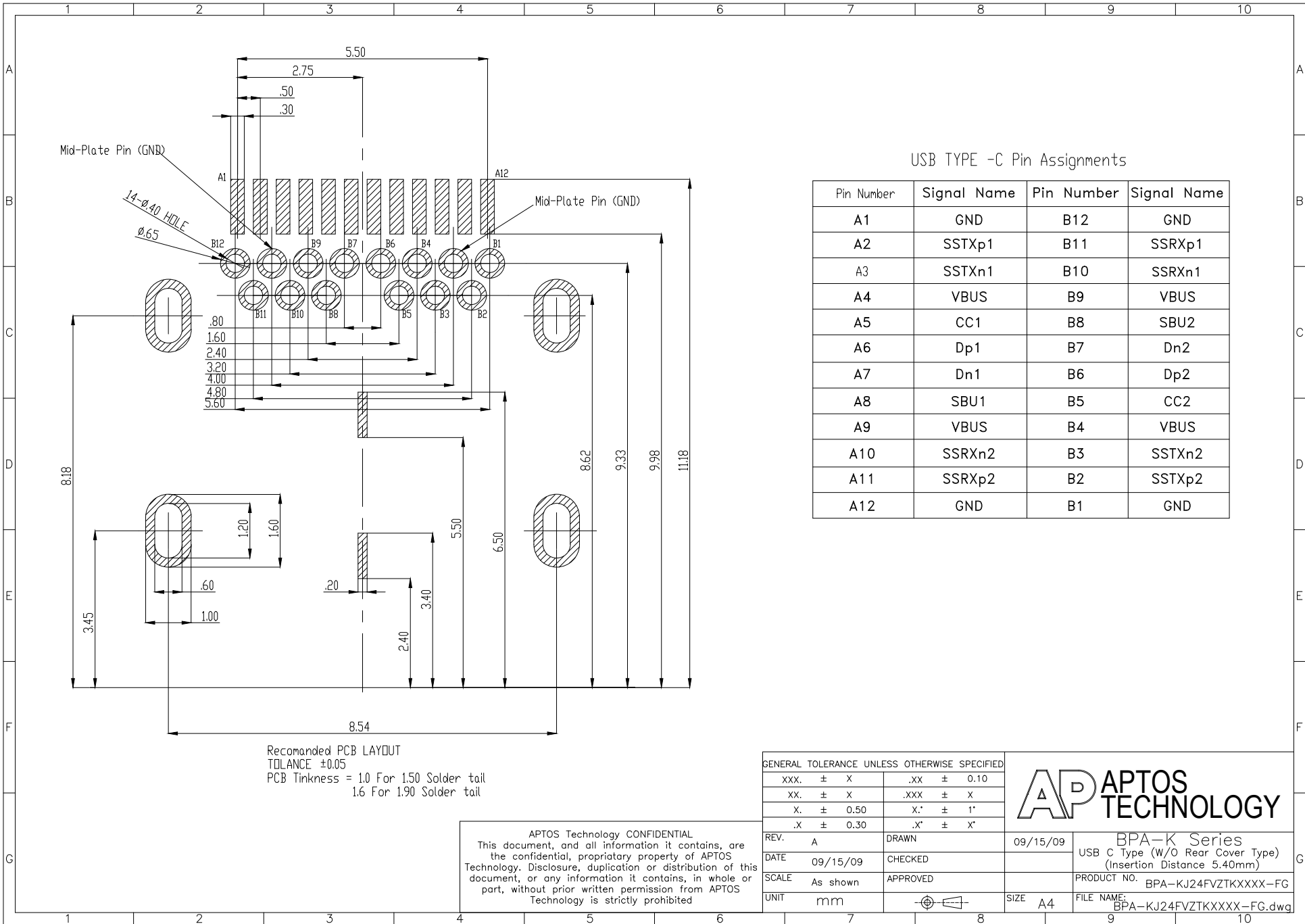
APTOS Technology CONFIDENTIAL
 This document, and all information it contains, are the confidential, proprietary property of APTOS Technology. Disclosure, duplication or distribution of this document, or any information it contains, in whole or part, without prior written permission from APTOS Technology is strictly prohibited

| | |
|--|------------|
| GENERAL TOLERANCE UNLESS OTHERWISE SPECIFIED | |
| xxx. ± X | .xx ± 0.10 |
| xx. ± X | .xxx ± X |
| x. ± 0.50 | x.' ± 1" |
| .x ± 0.30 | .x' ± X" |
| REV. A | DRAWN |
| DATE 09/15/09 | CHECKED |
| SCALE As shown | APPROVED |
| UNIT mm | |



| | |
|----------|---|
| 09/15/09 | BPA-K Series USB C Type (W/O Rear Cover Type) (Insertion Distance 5.40mm) |
| | PRODUCT NO. BPA-KJ24FVZTKXXXX-FG |
| | FILE NAME: BPA-KJ24FVZTKXXXX-FG.dwg |

SIZE A4



USB TYPE -C Pin Assignments

| Pin Number | Signal Name | Pin Number | Signal Name |
|------------|-------------|------------|-------------|
| A1 | GND | B12 | GND |
| A2 | SSTXp1 | B11 | SSRXp1 |
| A3 | SSTXn1 | B10 | SSRXn1 |
| A4 | VBUS | B9 | VBUS |
| A5 | CC1 | B8 | SBU2 |
| A6 | Dp1 | B7 | Dn2 |
| A7 | Dn1 | B6 | Dp2 |
| A8 | SBU1 | B5 | CC2 |
| A9 | VBUS | B4 | VBUS |
| A10 | SSRXn2 | B3 | SSTXn2 |
| A11 | SSRXp2 | B2 | SSTXp2 |
| A12 | GND | B1 | GND |

Recomanded PCB LAYOUT
 TDLANCE ±0.05
 PCB Tickness = 1.0 For 1.50 Solder tail
 1.6 For 1.90 Solder tail

APTOS Technology CONFIDENTIAL
 This document, and all information it contains, are the confidential, proprietary property of APTOS Technology. Disclosure, duplication or distribution of this document, or any information it contains, in whole or part, without prior written permission from APTOS Technology is strictly prohibited

| GENERAL TOLERANCE UNLESS OTHERWISE SPECIFIED | |
|--|------------|
| xxx. ± x | .xx ± 0.10 |
| xx. ± x | .xxx ± x |
| x. ± 0.50 | x.' ± 1' |
| .x ± 0.30 | .x' ± x' |

| | | |
|----------------|----------|----------|
| REV. A | DRAWN | 09/15/09 |
| DATE 09/15/09 | CHECKED | |
| SCALE As shown | APPROVED | |
| UNIT mm | | |



BPA-K Series
 USB C Type (W/O Rear Cover Type)
 (Insertion Distance 5.40mm)
 PRODUCT NO. BPA-KJ24FVZTKXXXX-FG
 FILE NAME: BPA-KJ24FVZTKXXXX-FG.dwg



SIZE A4